

## FOAM COMPRESSION FIXTURE

2810-130

The foam compression fixture is designed for indentation and compression testing of expanded cellular materials. Standards that require this style of fixture include ASTM D 3574, Method B1 and B2, ASTM D 5672, and ISO 2439.

The fixture includes a perforated loading table and a circular indenter/ anvil. The 203 mm (7.992 in) diameter upper anvil incorporates a swivel joint. The base table is perforated with 6.5 mm (0.256 in) holes spaced on 20 mm (0.787 in) centers and is elevated from the mounting surface to allow for rapid air escape from the specimen.

### PRINCIPLE OF OPERATION

The specimen is placed on the perforated table that is attached to the instrument base. The indenter is brought down in contact with the specimen to establish a reference height. This is followed by a series of preconditioning loading segments and a test loading sequence. Data is captured during the test loading sequence which generally includes a dwell time. Results, which commonly include loads at defined percentage indentations or deflections, are then calculated.

### FEATURES

- Mounts to most standard Instron® universal material testing instruments and can be adapted to most other universal testing instruments
- Perforated table
- Swivel mounted indenter/ anvil
- Meets the ASTM D3574, Methods B1 and B2, and ASTM D5672 standards
- Meets the EN ISO 2439 standard
- Capacity: 10 kN



### APPLICATION RANGE

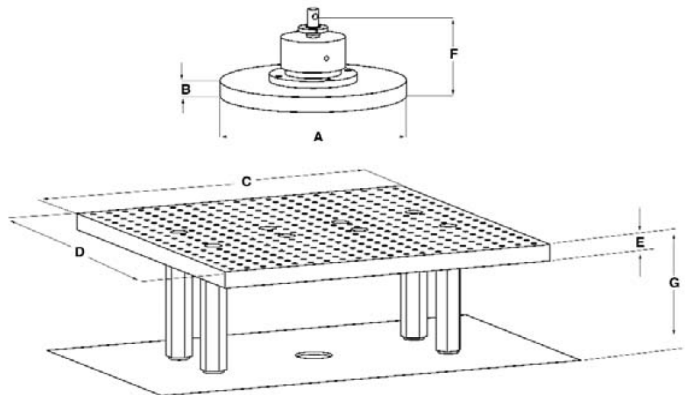
- IFD (indentation load deflection) and CFD (compression load deflection) of expanded cellular materials
- Suitable for an entire product or cut specimen
- Suitable for specimens with or without skins

**SPECIFICATIONS**

<b>Catalog Number</b>		2810-130
<b>Testing Standard</b>		ASTM D3574 (B1 & B2) and ASTM D5672
<b>Capacity</b>	<b>kN</b> <b>kgf</b> <b>lbf</b>	10 1000 2250
<b>Minimum Specimen Dimensions (W × D × H)</b>	<b>mm</b>	380 × 380 × 10
<b>Indentor / Anvil Diameter (A)</b>	<b>mm</b> <b>in</b>	203 8.0
<b>Indentor / Anvil Thickness (B)</b>	<b>mm</b> <b>in</b>	17.5 0.69
<b>Perforated Table Dimensions (C × D)</b>	<b>mm</b> <b>in</b>	387 × 387 15.25 × 15.25
<b>Perforated Table Thickness (E)</b>	<b>mm</b> <b>in</b>	19 0.75
<b>Mechanical Connection Upper</b>		6 mm clevis pin (Type Dm)
<b>Mechanical Connection Lower</b>		Standard base corporate mounting 4 xM10 bolts on a 90 mm x 280 mm pattern
<b>Instrument Compatibility</b>		All except 4411, 1130, 4301 and single column
<b>Effective Length of Indentor / Anvil (F)</b>	<b>mm</b> <b>in</b>	100 3.94
<b>Effective Length of Table / Stand-Off or Table / Spherical Seat (G) (approx.)<sup>1</sup></b>	<b>mm</b> <b>in</b>	145.5 5.73
<b>Temperature Range</b>		Ambient

A=Upper platen diameter  
F=Upper platen effective length  
C=Table width  
D=Table depth  
G=Table effective length

Note: 1. Available as additional option



2810-130 Foam compression fixture

[www.instron.com](http://www.instron.com)



Worldwide Headquarters  
825 University Ave, Norwood, MA 02062-2643, USA  
Tel: +1 800 564 8378 or +1 781 575 5000

European Headquarters  
Coronation Road, High Wycombe, Bucks HP12 3SY, UK  
Tel: +44 1494 464646

Instron is a registered trademark of Illinois Tool Works Inc. (ITW). Other names, logos, icons and marks identifying Instron products and services referenced herein are trademarks of ITW and may not be used without the prior written permission of ITW. Other product and company names listed are trademarks or trade names of their respective companies. Copyright © 2021 Illinois Tool Works Inc. All rights reserved. All of the specifications shown in this document are subject to change without notice.