

20 KN 3-POINT AND 4-POINT BEND FIXTURE

2810-500/505

PRINCIPLE OF OPERATION

Suitable for both static and dynamic flexure testing, this bend fixture can be configured as either a 3 or 4 point (requires addition 2810-505) device. The specimen is supported on two lower anvils and the load is applied in the center of the specimen by either a single upper anvil or 2 upper anvils when used in a 4 point configuration. The fixture has a variable span from 18 – 148 mm (0.7 – 5.82 in), allowing for various specimen lengths. **Both lower and upper parts are fitted with a flange attachment that are directly compatible with all new ElectroPuls® test instruments (except the E1000).**

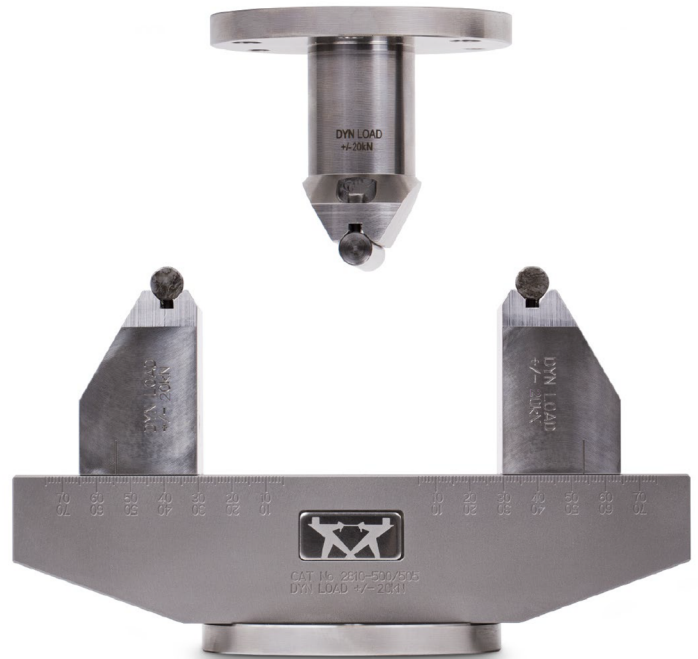
The specimen is placed on the two lower anvils whilst the upper anvil is used to apply an opposing force on the specimen. This allows for high-cycle fatigue flexural testing.

APPLICATION RANGE

- Bend testing of small components, plastics, wood, and composites
- Specimen shapes: Flat and round
- Suitable for both static & fatigue testing
- Compatible with all new ElectroPuls test instruments (except the E1000)

SPECIFICATIONS FOR 2810-500

Maximum Force Capacity	kN	20 kN (4.5 kip)
	lbf	4496
Accessory Width	mm	220
	in	8.66
Upper & Lower Fitting		Flange Mount (to suit 3xM6 or 3x M8 on 75mm PCD)
Support Span	mm	18 - 148
	in	0.7 - 5.82
Temperature Range	°C	-70 to +350
	°F	-94 to +662
Specimen Width	mm	50
	in	1.97
Anvil Diameter	mm	10
	in	0.39



3-Point Bend Fixture (2810-500)

FEATURES

- 20 kN (4496 lbf) capacity
- Support span 18 – 148 mm (0.7 – 5.82 in)
- Wide temperature range of -70 to +350°C (-94 to +662°F) when configured with the 3117-082 Pullrod kit
- Compatible with Deflectometer 2810-403 & 2620 or 2630 Series Extensometer

OPTIONAL ACCESSORIES

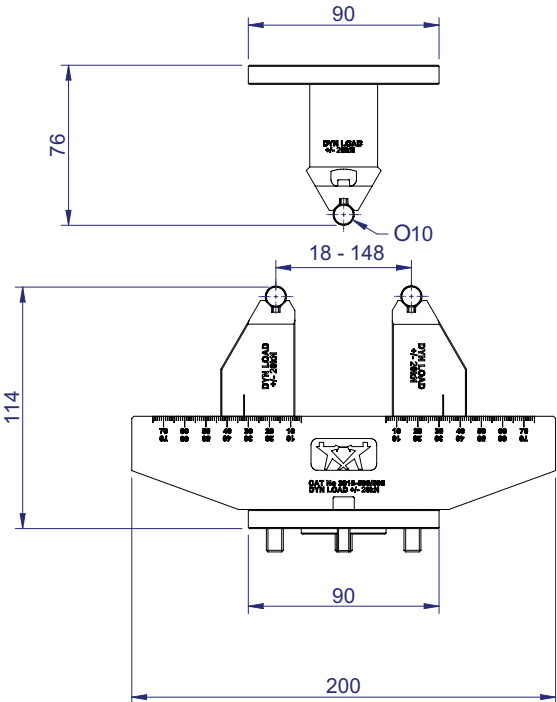
4-Point Bend Fixture Conversion Kit (2810-505): Used to convert 2810-500 from a 3-point to a 4-point bend fixture, the 4-point bend conversion kit has a variable span of 18 - 148 mm (0.7 - 5.82 in) and is suitable for both static and dynamic testing. The test specimen is supported on two lower anvils while the load is evenly applied by two upper anvils.

OPTIONAL ITEMS FOR USE WITH 2810-500

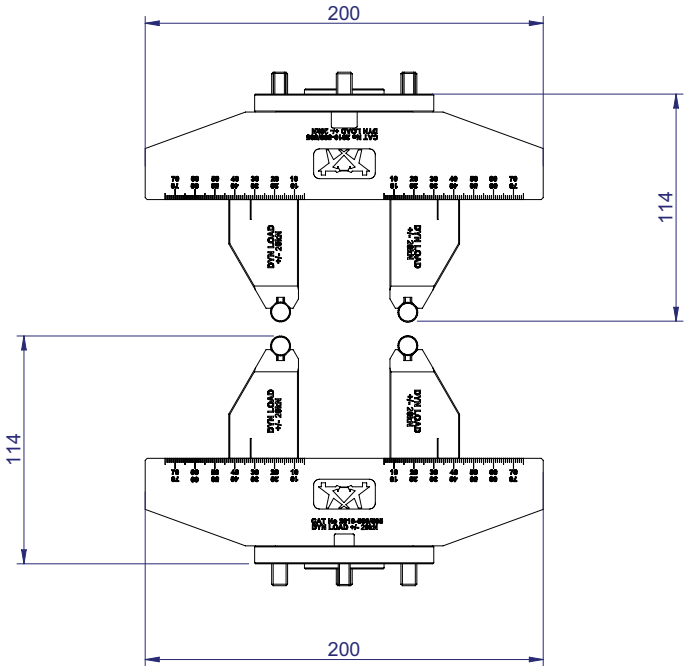
Catalog Number	Description
2810-505	4-Point Bend Conversion Kit
2810-403	Deflectometer
2620 Series Extensometer	Dynamic Extensometer
2630 Series Extensometer	Static Extensometer
3117-082	Pullrod Kit



4-Point Bend Fixture (2810-505)



3-Point Bend Fixture (2810-500)



4-Point Bend Fixture (2810-505)

www.instron.com



Worldwide Headquarters
 825 University Ave, Norwood, MA 02062-2643, USA
 Tel: +1 800 564 8378 or +1 781 575 5000

European Headquarters
 Coronation Road, High Wycombe, Bucks HP12 3SY, UK
 Tel: +44 1494 464646

CEAST Headquarters
 Via Airauda 12, 10044 Pianezza TO, Italy
 Tel: +39 011 968 5511

Instron is a registered trademark of Illinois Tool Works Inc. (ITW). Other names, logos, icons and marks identifying Instron products and services referenced herein are trademarks of ITW and may not be used without the prior written permission of ITW. Other product and company names listed are trademarks or trade names of their respective companies. Copyright © 2021 Illinois Tool Works Inc. All rights reserved. All of the specifications shown in this document are subject to change without notice.